

# HOW MUCH INTERNAL WORK IS REQUIRED TO OPERATE DIFFERENT VAN SOLUTIONS?

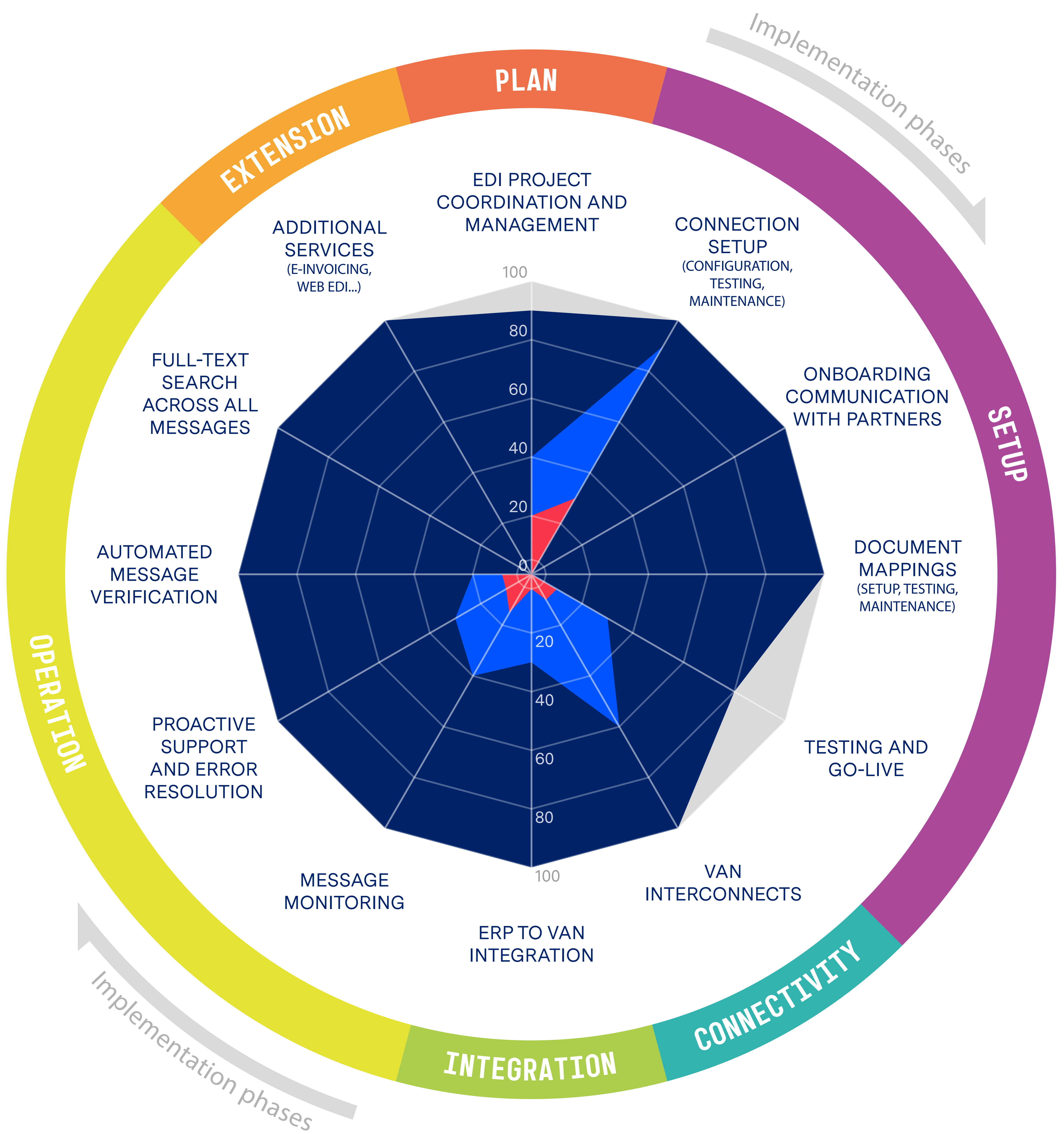
for the vast majority of supply chain businesses handling EDI internally is neither an efficient, nor a realistic long-term solution - with the complications surrounding VAN connectivity providing issues for many internal teams.

Following (clockwise) the life cycle of a system implementation, see how much work (%) is typically done by technology only solutions (X.400, Peppol etc.), managed VANs and fully managed VANs.

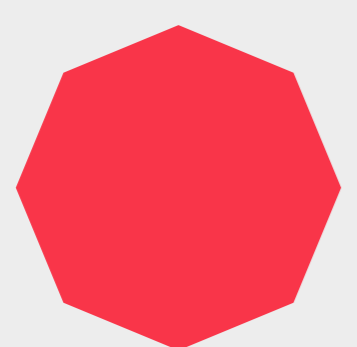
The radar chart below is designed to help businesses in this position to visualise how much of the total work required to setup and maintain an efficient EDI solution is done by different types of VAN / EDI software solutions.

## HOW MUCH OF THE TOTAL WORK DO DIFFERENT SOLUTIONS REALLY DO?

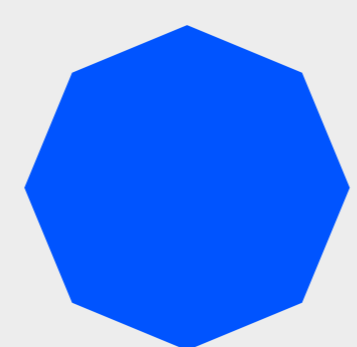
Chart shows percentage of task supported and carried out by solution provider (100% = no internal effort needed)



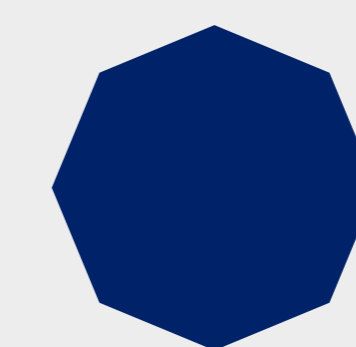
### KEY



Technology only (X.400, Peppol etc.)



Managed VAN



Fully managed VAN

## SOLUTION ASSISTANCE AT A GLANCE

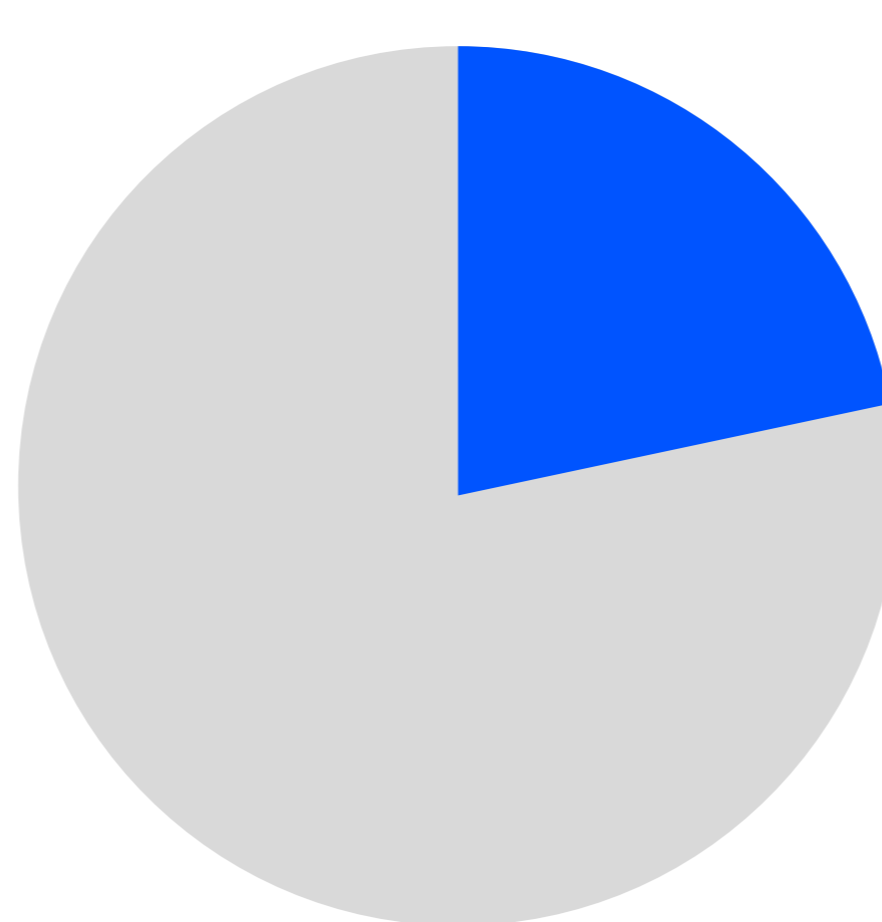
By condensing the granular information above, it is possible to identify roughly what percentage of the total work required to achieve a successful outcome is completed by each of these three solution types

### TECHNOLOGY ONLY



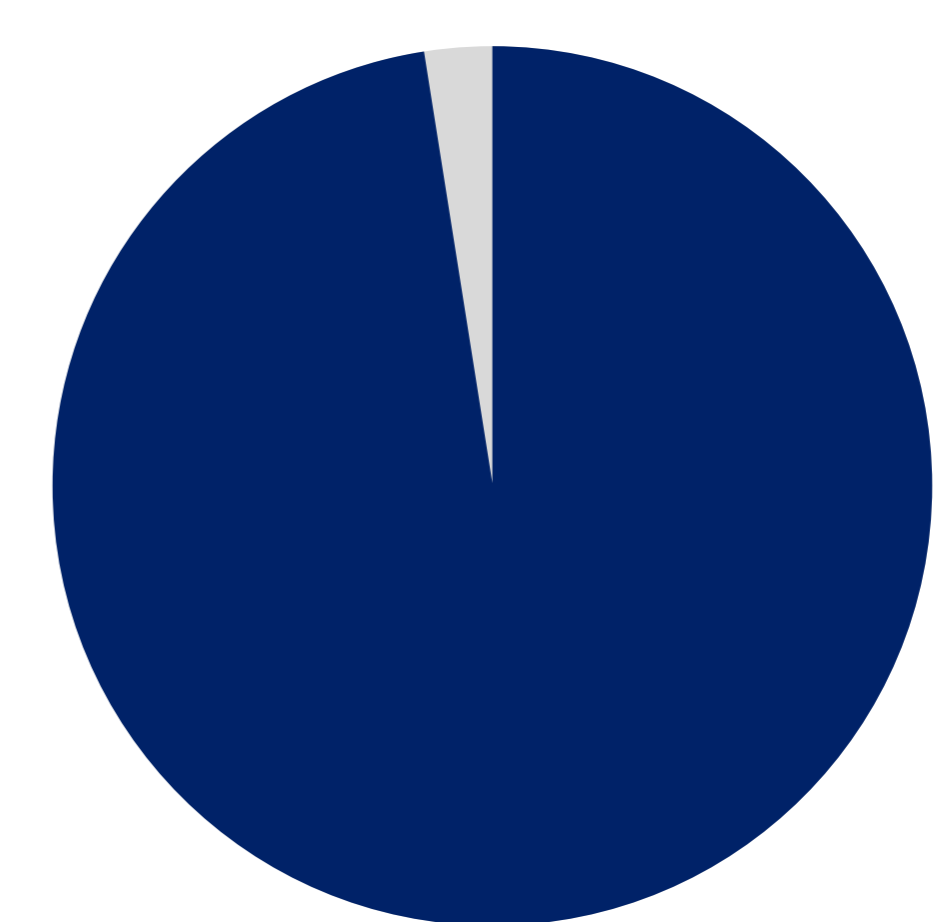
9%

### MANAGED VAN



28%

### FULLY MANAGED VAN



97%